



# Lawson, Noble & Webb, Inc. LB #6674

ENGINEERS • PLANNERS • SURVEYORS

590 NW Peacock Boulevard, Suite 9, Port St. Lucie, Florida 34986  
(561) 878-1700 • fax: (561) 878-1802 • email: lnw-psl@lw-inc.com

West Palm Beach • Port St. Lucie

## EXHIBIT "D" WATERS EDGE PLAT TWO COMMON AREA

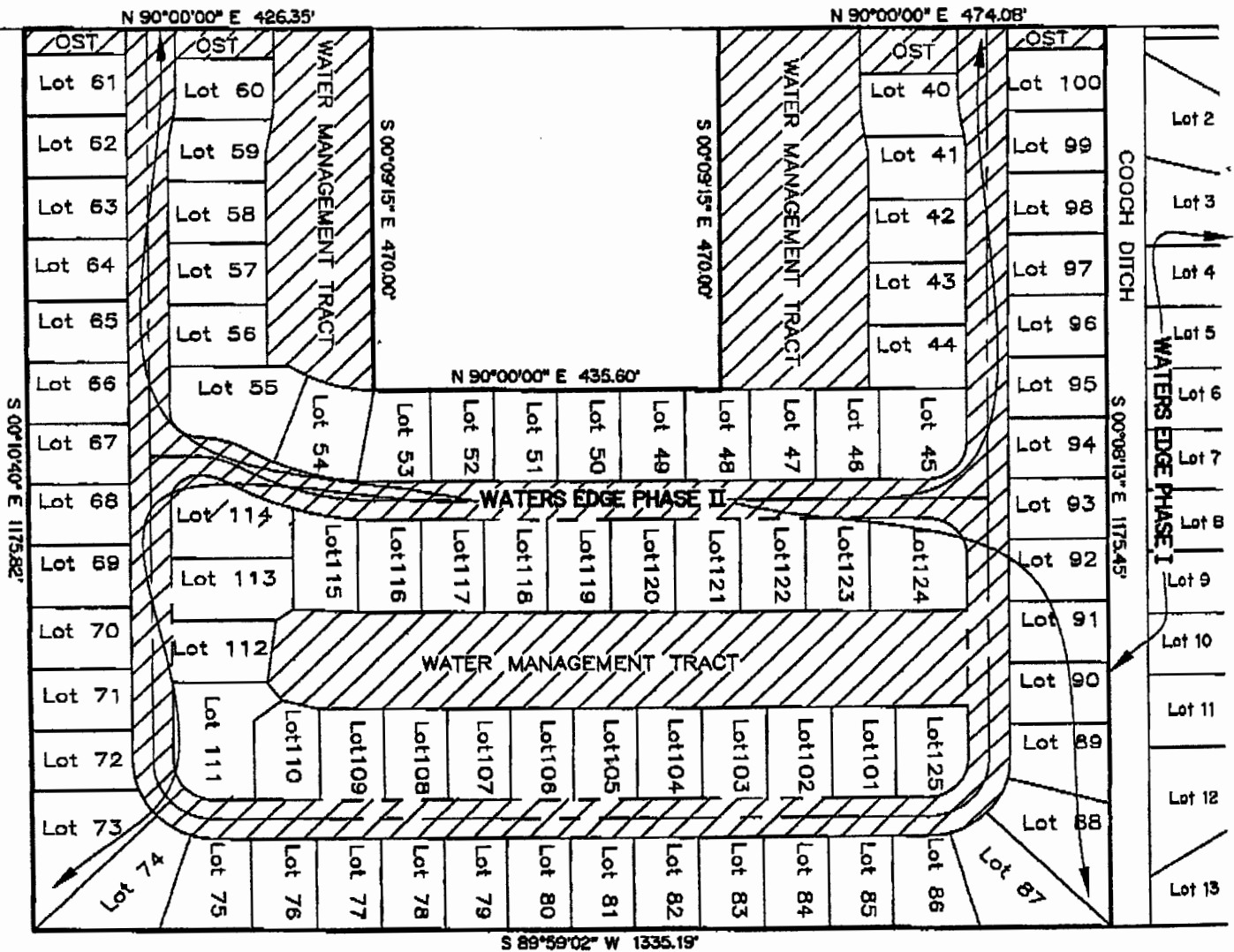


= COMMON AREA

OST = OPEN SPACE TRACT

1ST STREET S.W.

SCALE: 1"=200'



I:\Data\400-499\B453\CAD\B453Exhibit.dwg 02/04/2002 02:07:40 PM EST

JOB No. B453

BY: GRB

CHECKED: MTK

F.B. N/A PG. N/A

DATE: 11-6-00